

# SONIC THE HEDGEHOG 3 SONIC & KNUCKLES

fQ[]f€,ì'ì'ð

—V,Ñ,©,½

Šî-{'€[]ì

f[]fj[]f...[]fo[]

fXfyfVfff<fXfe[]fW[]Ef{[]fifXfXfe[]fW

fLfff%ofNf^[][]Đ%oô

fXfg[]fŠ[]

fwf<fv,ìŽg,ç•û

fzfbfgf%ofCf“

,»,ì'¼

## fQ [f€ ,ì'í'ð

@,±,ìCD,É,íwSONIC THE HEDGEHOG 3xwSONIC&KNUCKLESx,ì,Q- {,ìf\  
ftfg,ªŽù,ß,ç,ê,Ä,ç,Ü,·B,» ,ê,¼,ê'P'ì,Å—V,Ô,±,Æ,à,Å,«,Ü,·,μA,Q- {,ð'±  
, ,ÄfvfçfC,Å,«,éwSONIC THE HEDGEHOG3 & KNUCKLESx,Æ,μ,ÄŠy,μ,p,±,Æ,à%oÅ"\  
,Å,·B

## ,P D uSONIC THE HEDGEHOG 3 v

uSONIC THE HEDGEHOG 3v'P'ì,Å,ìfvfçfC,Å,·B  
fvjfbfN AfefCf<fX,ð'€ ìfLfff%ofNf^ [ ,Æ,μ,Ä'I,Ô,±  
,Æ,ª,Å,«,Ü,·Bf] [f" ,U,ðfNfŠfA,·,é,Æ AfGf" fffBf" fO,Æ,È,è,Ü,·B

## ,Q D uSONIC&KNUCKLES v

uSONIC&KNUCKLESv'P'ì,Å,ìfvfçfC,Å,·B  
fvjfbfN AfifbfNf<fY,ð'€ ìfLfff%ofNf^ [ ,Æ,μ,Ä'I,Ô,±  
,Æ,ª,Å,«,Ü,·Bf] [f" ,U,ðfNfŠfA,·,é,Æ AfGf" fffBf" fO,Æ,È,è,Ü,·B

## ,R D uSONIC THE HEDGEHOG 3 & KNUCKLES v

uSONIC THE HEDGEHOG 3v uSONIC&KNUCKLESv,ì,Q-  
{,ð±'ì,<sup>3,1,½</sup>ó'Ô,Å,ìfvfçfC,Å,·B uSONIC  
3v,ìf] [f" ,P,©,çŽn,Ü,è Af] [f" ,U,ðfNfŠfA,·,é,Æ A,»,ì,Ü,Ü uSONIC&KNUCKLESv,ìf] [f" ,P,  
Ö,Æ i,Ý,Ü,·B,·,x,Ä,ìfLfff%ofNf^ [ ,ð'í'ð,·,é,±,Æ,ª,Å,«,Ü,·B

—V,Ñ,©,½

.P.of,[]fh

fRf“fyfefBfVf#f“f,[]fh

**,P[]D[]uSONIC THE HEDGEHOG 3[]v**

**[]@[]@[]uSONIC THE HEDGEHOG 3 & KNUCKLES[]v**

,Đ,Æ,è,ÅfvfĀfC,·,é,P.of,[]fh,Æ[]AfXfe[]fWfNfŠfA,ì'¬,³,đ,Ó,½,è,Å<£  
,xRf“fyfefBfVf#f“f,[]fh,ì,QŽí—p,ª—p^Ó,³,è,Ä,č,Ü,·[]B  
,Ü,½[]A,P.of,[]fh,Å,Í[]A,č,ì,Î,ñ[]%,ß,ÉfvfĀfC,·,é,Æ,«[]AfLfff%ofNf^[]['I'đ,Å[]ufl  
fjfbfN,ÆfefCf<fX[]v,đ'l,ñ,Å,¨,,Æ[]A,č,Â,Â,àfvfĀfCf,,[][,Q,ªfefCf<fX,Æ,µ,ÄfvfĀfC,ÉŽQ  
%oÁ,Å,«[]A<|—ÍfvfĀfC,đŠy,µ,p,±,Æ,ª,Å,«,Ü,·[]B  
f^fCfjg<%oæ-Ê,Å[]u1P PLAYER[]v,à,µ,-  
,Í[]uCOMPETITION[]v,đ[]y[]ª[]z[]y[]«[]z,Å'I'đ,µ[]A[]yEnter[]z,ÅĀ^'è[]AfXf^[]fg,Å,·[]B

**,Q[]D[]uSONIC & KNUCKLES[]v**

,Đ,Æ,è,ÅfvfĀfC,·,é,P.of,[]fh,µ,©, ,è,Ü,¹,ñ[]BfLfff%ofNf^[][]ifl  
fjfbfN[]AfifbNf<fY[]j,đ[]y[]ª[]z[]y[]«[]z,Å'I'đ,µ[]A[]yEnter[]z,ÅĀ^'è[]AfXf^[]fg,Å,·[]B

## ,P,of,[]fh

f\jfbfN[]AfejCf<fX[]AfjfbfNf<,l,R[]l,í[]ADr.fGfbfOf}f“,l%oA-d,ð’@,-  
,½,β[]AŠëĀĒ,³’Ò,¿Žó,̄,é[]”[]X,l][]f“,É’s,ñ,Å,ç,«,Ü,·[]BŠef][]f“,ÉfAfNfg,Í,Q,Â[]Bf{fXfLfff%o  
,âDr.fGfbfOf}f“,ð,â,Á,Â,̄,Ä[]A“‡,l”®•”,½,¿,ð<~[]o,·,ê,l][]f“fNfŠfA,Å,·[]B

ff[]f^fZfĀfNfg

%oæ-Ê,ìĀ©•û

fQ[]f€f[]fo[][]•fRf“fefBjff...[]%oæ-Ê

[]...’t,Å,Í’s,Â,̄,ð-Y,ê,.,É

f[]Cf“fgf}[]f[]L.Å[]ÄXf^[]fg

fŠf“fO,ð[]W,β,Äf{[]fifXfXfe[]fW,Ö

,.,â,μ,ç[]ê[]Š,ÉfAf^fbfN

fXfyfVfff<fŠf“fO,ÅfXfyfVfff<fXfe[]fW,Ö

fAfCfef€,Åfpf[][]fAfbfv

fofŠfA,ìĀø%oÊ,ÆfXfyfVfff<fAf^fbfN

f{fXfLfff%o,ÉfAf^fbfN

fAfNfgfNfŠfA

## ff[]f^fZfCEfNfg

,P,of,[]fh,Å,í[]A[]Å[]%,ÉfZ[][fu]ff[]f^,ðfZfCEfNfg,μ,Ü,·[]BfQ[][f€,ð[]i,β,Ä,ç,,Æ“r’+CEo  
%oβ,āŽ©“®“l,ÉfZ[][fu,³,è,Ä[]AŽÿ%oñ,í‘O%oñ,ì’±,«,©,çfvfCEfC,·,é,±,Æ,ā,Å,«,Ü,·[]B  
[]fL[][,Á‘l’ð,ð,â,β[]Af^fCfjf<%oæ-Ê,É-β,è,Ü,·[]B

ff[]f^,ð·Û‘¶,μ,È,ā,çfvfCEfC

ff[]f^,ð·Û‘¶,μ,È,ç,ÅfvfCEfC

fLfff%ofNf^[]fZfCEfNfg

‘±,«,ðfvfCEfC,·,é,Æ,«

·Û‘¶ff[]f^,ð[]Á,·

NEW

NEW

NEW



☐Ÿff☐[f^,ð•Ù'¶,μ,È,ç,Åfvfœfç

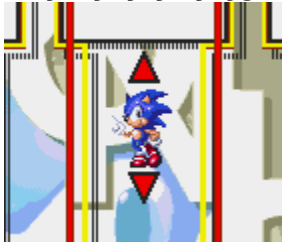
☐@☐¶'α,ìNO SAVE,ð☐y☐©☐z☐y☐''☐z☐{☐yEnter☐z,ÅfZfœfNfg☐B

☐@fQ☐[f€,ì'r'tœo%oβ,ð•Ù'¶,μ,È,ç,Åfvfœfç,Å,«,Ü,·☐B



ÄffLfff%oZfNfg

@ff[f^fZfNfg,ì,Æ,«,ÉA[]y[]z[]y[]«z,ÄffLfff%o,ðfZfNfg,Å,«,Ü,·B





□Ÿ'±,«,ðfufŒfC,·,é,Æ,«

□@“r'tŒo%ß,ª•Ů'¶,³,ê,½ff□[f^,ðfZfŒfNfg□B

□@,» ,ê,Ü,Å,É□i,ñ,¾f)□[f“ ,ìfAfNfg,P,©,ç□ÄfXf^□[fg,Å,« ,Ü,·□B

□@ff□[f^,É,í)□[f“ ,Æj)ifXfGf□f%of<fh,ì□” ,ª•\Ž!,³,ê,Ü,·□B

□@•Ů'¶,³,ê,½ff□[f^,ìfLfff%o,í•i□X,Å,« ,Ü,¹,ñ□B





%œ-Ê,ìĈ©•û



‡@fXfRfA

□@,PfAfNfg“à,Â,ìŽc,è□\$ĈÈÀŽžŠÔ,đŽ!,μ,Ä,ϕ,Û,·□B

‡Af^fCf€

□@,PfAfNfg“à,Â,ìŽc,è□\$ĈÈÀŽžŠÔ,đŽ!,μ,Ä,ϕ,Û,·□B

□@9:59,đ%œz,!,é,Æf^fCf€fI□[fo□[,Âf\_fEf“,Â,·□B

‡BfŠf“fO

□@,PfAfNfg“à,Â□W,β,½fŠf“fO,ì□”,Â,·□B

□@fŠf“fO,đ1ĈÈÂ,Â,àŽ□,Á,Ä,ϕ,é,î□Af\_f□□[fW,đŽó,¯,Ä,àf\_fEf“,É,È,è,Û,<sup>1</sup>,ñ□B

□@,½,¾,μ□Af\_f□□[fW,đŽó,¯,é,Æ□A,»ìŽžŽ□,Á,Ä,ϕ,½fŠf“fO,í”ò,ÑŽU,Á,Ä,μ,Û,ϕ

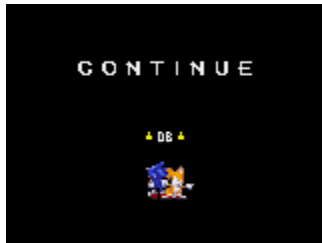
□@,Û,·□BfŠf“fO,đ100ĈÈÂ□W,β,é,Æ,P,t,o,Â,·□B

‡CfLfff%ofNf^□[Žc,è□”

□@Žg—p,μ,Ä,ϕ,éLfff%ofNf^□[,ìŽc,è□”,Â,·□Bf\_fEf“,·,é,Æf}fCfifX,P,<sup>3</sup>,ê,Ä,ä,«□AŽc,è□”

□@,<sup>a</sup>,P,ìŽž,Éf\_fEf“,·,é,ÆfQ□[f€fI□[fo□[,Â,·□B

fQ[f€fI[fœ[f•fRf“fefBfjf...[‰æ-Ê



@fLfff

%fNf^[,iŽc,è” ,ª,P,iŽž,Éf\_fEf“ ,·,é,ÆfQ[f€fI[fœ[f,Â,·B,½,¾,µAfXfyfVfff<fXfe[fW,ÅfRf  
“fefBfjf...[,đ“¾,Ä,ç,ê,îA‘±,¯,ÄfQ[f€ ,đvfçfC ,·,é,±,Æ,ª,Â,«,Ü,·B  
‘±,¯,ÄfQ[f€ ,đ,µ,½,çê±,íAfRf“fefBfjf...[‰æ-Ê,ìjJfEf“fg,²f[f,É,È,é‘O,ÉyEnterz,đ  
‰ÿ,µ,Ä‰º,³,çBf\_fEf“ ,µ,½fAfNfg,ìÅ‰,©,çÄfXf^ [fg,Â,«,Ü,·B

□...’t,Ā,í’s,Ā,¬,đ-Ÿ,ê,,É



□@□...’t,É’,ϕŠÔ,ϕ,é,ÆjffEf“fgf\_fEf“,Žn,Ü,è,Ü,·□BjffEf“fg,³f[f□,É,È,é’O,É<ó<C,ì-  
A,Ā’s,Ā,¬,đ,μ,È,ϕ,Æ□Af\_fEf“,É,È,è,Ü,·□B

f|fCf“fgf}[]fj[][,Á[]ÄfXf^[]fg



[]@f|fCf“fgf}[]fj[][,í[]A[]G,é,ÆfNf<fNf<%oñ,Á,Äfsfjfsfj”\_-Á,μ,Ü,·[]B  
,±,ϣ,μ,Ä,¨,¯,î[]Af\_fEf“,μ,Ä,à,»,'O,É[]G,Á,½f}[]fj[][,ì[]Š,©,ç[]ÄfXf^[]fg,Á,«,Ü,·[]B

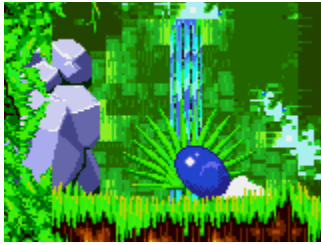
fšf“fo,ðw,ß,Äf{[fifXfxfe[fW,Ö



@fšf“fo,ð^ê'è^è^ÈãŽ,Á,Ä,ç,é,Æ,«,Éf|fCf“fgf}[fj[.ÉG,é,ÆAf|fCf“fgf}[fj[ã,ÉfLf%ofLf  
%oCEö,é,ì—Ö,»e,Û,·B[i]wSonic 3x,Å,í50EÂ^ÈãA,»,ê^ÈŠO,Å,í20EÂ^Èãj

@,±,ì,ì—Ö,É”ò,Ñž,p,ÆAf{[fifXfxfe[fW,Éi,ß,Û,·B

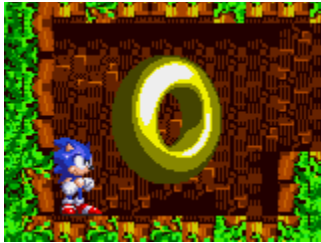
, , â, µ, ç, ê, Š, ÉfAf^fbfN



@, , â, µ, ç, Ç, âŠâ, ð, , Á, ½, ç AfX [fp [fXfsf“f\_fbfVf..., â%ñ“]fWfff“fv, ÅfAf^fbfN B  
%B, µ•“%® , â’É~H, ðCE ©, Â, ©, è, Ü, · B  
@CE ©, È, ê, È, ç ŽdŠ|, -, È, Ç, É, à A“~, ¶, æ, æ, ÉfAf^fbfN B  
@ã, Éæ, Á, Ä•ûCEüfL [ , Å“® , ©, , é, à, ì, à, , è, Ü, · B



fXfyfVfff<fŠf“fO,ÅfXfyfVfff<fXfe□lfW,Ö



□@%oB,μ•”%o®,â’Ê~H,É,í□AfAfCfef€,âfXfyfVfff<fŠf“fO,â%oB,³,ê,Ä,ç,é,ì,Å□A, ,â,μ,ç□ê□Š,í,Ç  
,ñ,Ç,ñ’²,x,Ä,ç,«,Ü,μ,â,æ□B

□@fXfyfVfff<fŠf“fO,É□G,é,Æ□AfXfyfVfff<fXfe□lfW,É□i,ß,Ü,·□B

**fAfCfef€ ,Âfpf[] [fAfbfv**

[]@%õñ“]fWffff“fv,âfX[] [fp[] [fXfsf“f\_fbfVf... ,ÂfAfCfef€f{fbfNfX,ÉfAf^fbfN,·,é,Æ[]A,““¾,Â•Ö—  
~,ÈfAfCfef€,ªŽè,É“ü,è,Ü,·[]B



[]@**f r f b f 0 1 0 f š f “ f o**

fŠf“fO,ªfvf%ofX10ĈÊ



[]@, **P, t, o**

fvfĈEfCf,,[] [fLfff%o,ìŽc,è” ,ªfvf%ofX,P



[]@ **f n f C f X f s [] [ f h**

^è'èŽžŠÔ,¾,~'-,éfXfs[] [fh,ªfAfbfv



[]@-<sup>3</sup>**G**

^è'èŽžŠÔ,¾,~\_f\_f[] [fW,ðŽó,~,È,,È,é

**fofŠfA,ìĀø%oÊ,ÆfXfyfVfff<fAf^fbfN**

□@,R,Â,lf ofŠfA,É,í,» ,ê,¼,ê^á,Á,½“Á’¥,ª, ,è,Û,·□B  
fXfyfVfff<fAf^fbfN,đŽg,!,é,ì,lf\jfbfN,¾,¯,Å□Afe fCf<fX□AfjfbfNf<,lf ofŠfA,ìĀø  
%oÊ,¾,¯,ÅfXfyfVfff<fAf^fbfN,íŽg,!,Û,¹,ň□B

□@%oň“]fWfff“fv’t,É□yEnter□z,ÅfXfyfVfff<fAf^fbfN,Å,·□B



□“ □@ftfĀfCf€fofŠfA

%oî%oŠ□UCE,,lf\_f□□lfW,đŽó,¯,È,¢□B□...’t,É—Ž,¿,é,Æ,È,,È,é□B  
fXfyfVfff<fAf^fbfN,í%oî,ì<Éf\_fbfVf...□B



□“ □@fAfNfAfofŠfA

□...’t,Â,ì’s,Â,¬,ª,¢,ç,È,¢□BfXfyfVfff<fAf^fbfN,í~A’±fofEf“fh□B



☐" ☐@fTf"f\_☐lfofŠfA

<β,,lfŠf"fO,đ<z,ϕŠñ,<sup>1</sup>,é☐B☐... 't,É—Ž,ι,é,Æ,È,,È,é☐B  
fXfyfVfff<fAf^fbfN,í,Q'ifWfff"fV☐B

f{fXfLfff%,ÉfAf^fbfN



□@fAfNfg,ìf%ofXfg,Å,í{fXfLfff%,³'Ò,¿Žó,¯,Ä,ç,Û,·□B

□@,í,°,μ,ç□UCE,,ð,©,í,μ,Ä□A%oñ“]fWfff“fv,ÅfAf^fbfN,μ,Ä%oº,³,ç□B

# fAfNfgfNfŠfA



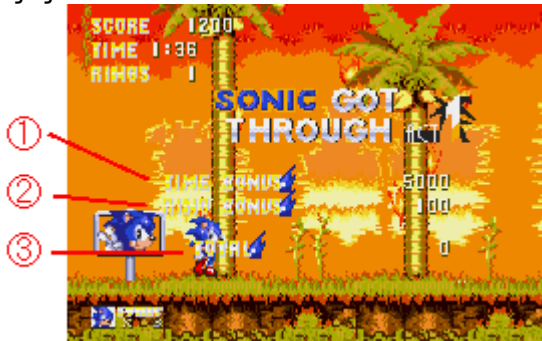
□@

□@f{fXfLfff%o,đ,â,Á,Â, ¯,é,Æ□Af{□[fiXfvfCE□[fg,a—Ž,¿,Ä,«,Ü,·□B

□@fvfCE□[fg,a'n-Ê,É,Â,,ÆfAfNfgfNfŠfA,Â,·□B

□@fvfCE□[fg,a'n-Ê,É,Â,'O,É□G,é,Æ□A,Æ,«,Ç,«fCfC,±,Æ,a<N,±,è,Ü,·□B

□@fXfRfA%oæ-Ê



□@

□@‡@fNfŠfAf^fCf€,a'Z,ç,Æ□,“¾”\_É,È,éf^fCf€f{□[fiX

□@‡AZæ,Á,½fŠf“fO,a'½,ç,Æ□,“¾”\_É,È,éfŠf“fOf{□[fiX

□@‡BfXfRfA,ifg□[f^f<

## fRf“fyfefBfVf#f“f,[]fh

[]@fjfbfN[]EfefCf<fX[]EjfbfNf<, ©, çLfff%  
, ðfZfCefNfg, µ, Ä[]AfvfCefCf,, [][, PVSfvfCefCf,, [][, Q, ð'í[]ívfCefC, ðŠy, µ, ß, Ü, ·[]B, Ç, ÷, ç, ð' →, -  
fAfNfg, ðfNfŠfA, Å, «, é, ©, ð[]AfC[]fX[]ÿ•%<sub>o</sub>, Å, ·[]B

f.[]fhZfCefNfg

fAfCfef€ fif“[]^fift

'€[]i•û-@,Æ%<sub>o</sub>æ-Ê, ðC©•û

fC[]fX^ÈŠO, ð%<sub>o</sub>æ-Ê, É, Â, ç, Ä

'í[]íR[]fX

'í[]íf, []fh, ðAfCfef€

## f, □ [fhfzfĈfNfg



GRAND PRIX □ c □ c ' S , T f Ĉ □ [ f X , Å ' í □ í , : , é f O f % o f " f v f Š f , □ [ f h □ B

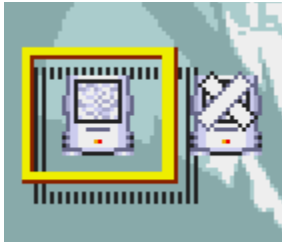
MATCH RACE □ c □ c , P f Ĉ □ [ f X , ì , Ý , ð ' í □ í , : , é f , □ [ f h □ B

TIME ATTACK □ c □ c , P □ | — p , ì f ^ f C f € f A f ^ f b f N f , □ [ f h □ B

EXIT □ c □ c f ^ f C f g f < % o æ - Ê , É - ß , é □ B



fAfCfef€,ìfif“□^fift

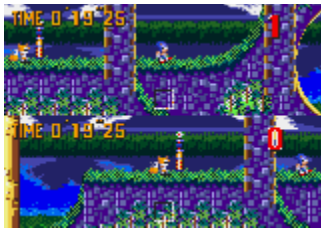


□@GRAND PRIX,ÆMATCH

RACE,ìfAfCfef€“o□ê,ìfif“□^fift,ð□A□y□©□z□y□“□z,ÅfZfƒfNfg,Å,«,Ü,·□B

□@TIME ATTACK,ìfAfCfef€,È,μ,Å,·□B

‘€[]•û-@,Æ%œ-Ê,ìĈ©•û



[]@‘€[]•û-@,í,P,of,[]fh,Æ,“,È,¶,Á,·[]B,Q,o,ì[]ê[]±,í[]A^È  
%œ,ìfL[],Á‘€[]ì,μ,Û,·[]BfWf#fCfXfefBfbfN,đŽg—p,·,é,±,Æ,à%Â”\,Á,·[]B[]“ Options

,Q,o‘€[][]@[]@[]@[]@[]@[]@[]@ []@[]@[]y,c[]z[]ă,đĈ©[]ă,°,é  
[]¶^Ú“ @[]i%ÿ,μ’±,“,é,Æ%œÁ’-[]j[]y,w[]z[]y,u[]z%œE^Ú“ @[]i%ÿ,μ’±,“,é,Æ%œÁ’-[]j  
[]@[]@[]@[]@[]@[]@[]@[]@[]@ []@[]@[]@[]@[]@[]@[]y,b[]z%œ,đĈ©%œ,è,·  
[]@[]@[]@[]@[]@[]@[]@[]@[]@ []y,`[]z%œñ“]fWfff“fv

[]@‘í[]if,[]fh,ì%œ-Ê,í[]ă%œ,Q•ăŠ,,,É,È,Á,Ä,ç,Û,·[]B[]ă,ă,P,o[]A%œ,ă,Q,o,Á,·[]B  
[]@MATCH RACE,ÆTIME ATTACK,ìfĈ[]fX’+[]A[]yESC[]z,ÁfĈ[]fX,đ’+Ž~,Á,«,Û,·[]B

%œ-Ê,ìĈ©,©,½



‡@f^fCf€ ,a9’}59”}59,đ%oz,|,é,Æf^fCf€f[]fo[][]B  
 []@,P,o,Æ,Q,o,af^fCf€f[]fo[],É,È,é,Æ^ø,«•a,[]B

‡AZæ,Á,½fAfcf€f€,đ•\Ž![]B  
 fXfs[]fhfAfbfv[]EfXfs[]fhf\_fEf“[]EfŠf“fo,ì,Ý[]B

‡B,ç,Ü%o½Žü-Ú,©,đ•\Ž![]B  
 []@,Ç,ìf,[]fh,Å,à,Pf€[]fX,ífR[]fX,đ,TŽü,·,é[]B

‡CfXfCbf` ,đ“¥,p,Æ^í[]í“ŠŽè,ìfWfff},a,Å,«,é[]B

**fœ[]fX^ÈŠO,ì%œ-Ê,É,Â,ç,Ä**

GRAND PRIX

MATCH RACE

TIME ATTACK

## GRAND PRIX



☐@fLfff%ofZfCEfNfg

fvfCEfCf,,☐[,P,í☐y☐☐☐z☐y☐☐☐z☐{☐yEnter☐z,ÁfLfff%ofZfCEfNfg☐B

fvfCEfCf,,☐[,Q,í☐y,`☐z,ÁfGf“fgfŠ☐☐B☐y,w☐z☐y,u☐z☐{☐y,`☐z,ÁfLfff%ofZfCEfNfg☐B



☐@☐Ÿ”s•\Ž!

WIN!!,☐☐Ÿ—~ŽÒ,Á☐ALOSE,☐”sŽÒ☐BTIE...,Í^ø,«•☐,~☐B

☐yEnter☐z,Á,TfCE☐[fX,²,Æ,lf^fCf€,Æfg☐[f^f<f^fCf€,đ•\Ž!☐B

## MATCH RACE



Ⓜ@fLfff%ofZfCefNfg

fvfCefCf,,[] ,P,íy[] ©[]z[]y[]"[]z[]{}[]yEnter[]z,ÅfLfff%ofZfCefNfg[]B

fvfCefCf,,[] ,Q,íy,`[]z,ÅfGf"fgfŠ[][]B[]y,w[]z[]y,u[]z[]{}[]y,`[]z,ÅfLfff%ofZfCefNfg[]B



Ⓜ@fR[]fXfZfCefNfg

[]y[]ª[]z[]y[]«[]z,ÅfR[]fXfZfCefNfg[]B%œ-Ê%E,ìf^fCf€,íTIME ATTACK,ìŽž,ìxfXfgf%ofbfv[]B

## TIME ATTACK



Ⓜ@fLfff%ofZfCfNfg

ⓂyⓂⓂzⓂyⓂⓂzⓂ{ⓂyEnterⓂz,ÅfLfff%ofZfCfNfgⓂB



Ⓜ@fRⓂ[fXfZfCfNfg

ⓂyⓂ²ⓂzⓂyⓂ«Ⓜz,ÅfRⓂ[fXfZfCfNfgⓂB%œ-Ê%E,lf^fCf€,lfxfXfgf%ofbfvⓂB



Ⓜ@f^fCf€%œ-Ê

,PⓂ` ,Tžü,lf%ofbfvf^fCf€,ÆfgⓂ[f^f<f^fCf€,ð•\Ž!ⓂB  
fxfXfg,R,Ü,Å,lf^fCf€,È,ç,îⓂAfCfRⓂ[fh,Æ,μ,Ä•Û'¶ⓂB

‘í[]fR[]fX

- AZURE LAKE ~A'±f<[]fv,ì, ,éĈĒî,ì[],'¬fR[]fX[]B
- BALOON PARK •—'DfWffff“fv,ª[]ÿ•%o,ìf|fCf“fg[]B
- CHROME GADGET ŽdŠ|,¯,ì'½,ċfefNfjffj<,ÈfR[]fX[]B
- DESERT PALACE fS[]f<'O,ì[]»,ì<',É,í—v'[]^Ó[]B
- ENDLESS MINE []ã%oº,É[]L,ª,é[]B“¹,Â”²,«,Â”²,©,ê,Â[]B



íif,lfh,lfAfCfef€



@fXfslfhfAfbfvcc^è'èŽžŠÔ,¾,-',éfXfslfh,afAfbfv



@fXfslfhf\_fEf"cc^è'èŽžŠÔ,¾,-',éfXfslfh,af\_fEf"



@fšf"focc^è%oň,¾,-\_f"lfW,đŽó,-,Ä,à'â"ä•v



@fofifi"cc"GG,é,Æ'n-Ê,É-Ž,¿,Ä"¥,p,ÆŠŠ,é



@Ž©'-"š'e"cc"GG,é,Æ'n-Ê,đ-,è"o,μ,Ä,Ô,Â,©,é,Æ"š"BB



@fof"cc"GG,é,Æ'n-Ê,É-Ž,¿,Ä"¥,p,Æ'âfWfff"fv



@f`fF"fW"cc'í'ŠŽè,ÆŽ©•a,lfAfCfef€,đf`fF"fW

Šî-{'€̀ì

f\_l[f{[fhEfwf#fCfXfefBfbfN,À,ì'€̀ì

“ÁŽêfAfNfvf#f”

ftf<%œ-Ê

f\_l[fY

fQ[f€,.)ÄfXf^\_fg

fŠfZfbfg

fQ[f€,.)\_1



## “ÁŽêfAfNfVf†f”

fX□[fp□[fXfsf“f\_fbfVf...□ififjfbfN□AfefCf<fX□AfifbfNf<□j

,v%oñ“lfAf^fbfN□ififjfbfN,¾,~□j

fXfyfVfff<fAf^fbfN□ififjfbfN,¾,~□j

”ò,ñ,¾,è%oj,ç,¾,è□ifefCf<fX,¾,~□j

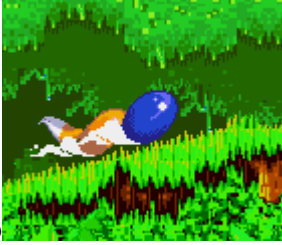
fVfbfjfAf^fbfN□ifefCf<fX,¾,~□j

fefCf<fX,ì<!—ÍfvfCEfC□ififjfbfN□•fefCf<fX,ì,Æ,«□j

Šš<ó,.,é□ififbfNf<,¾,~□j

•Ç,É,Â,©,Ü.é□ififbfNf<,¾,~□j

☐@fX☐[fp☐[fXfsf“f\_fbfVf...☐if\jfbfN☐AfefCf·fX☐AfifbfNf<☐j



☐@

☐@

☐@☐y☐«☐z,đ%oŸ,μ,½,Ü,Ü☐{☐yEnter☐z,ÅfXfsf“,đŠJŽn☐B

☐@☐y☐«☐z,đ•ú,<sup>1</sup>îfXfsf“,μ,È,<sup>a</sup>,çf\_fbfVf...,ÅfXf^☐[fg☐B

☐@,v%oñ“]fAf^fbfN☐if\ffbfN,¾,¯☐j



☐@

☐@%oñ“]fWfff“fv’t,É☐yEnter☐z,Å,Q’i☐UCE,,ì,v%oñ“]fAf^fbfN☐B

☐@%oñ“]’t,ì,Â,P,¶•—,ÅfAf^fbfN,μ,½,è“G,ì’e,ð’μ,Ë•Ô,μ,½,è,Å,«,é☐B

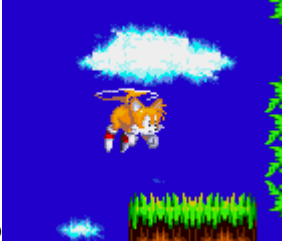
☐@fXfyfVfff<fAf^fbfN☐if\jfbfN,¾,☐j

☐@fofŠfA,đŽ☐,Á,Ä,ç,é,Æ,«☐A

%oñ“]fWfff“fv't,É☐yEnter☐z,ÅfXfyfVfff<fAf^fbfN,ª,Ä,«,é☐B☐“fofŠfA,ìEø

%oÊ,ÆfXfyfVfff<fAf^fbfN

☐@”ò,ñ,¾,è%oj,ç,¾,è☐ifefCf<fX,¾,¯☐j



☐@

☐@%oñ“]fWffff“fv’t,É☐yEnter☐z~A’Å,Åfvf<fvf<<ó,ð”ò,Ô☐B

☐@☐...’t,¾,ÆÆç,©,«%oj,¬,É,È,é☐B

☐@’·,çŽžŠÔ±,¯,é,Æ☐A”æ,ê,Ä”ò,ñ,¾,è%oj,ç,¾,è,Å,«,È,,È,é☐B

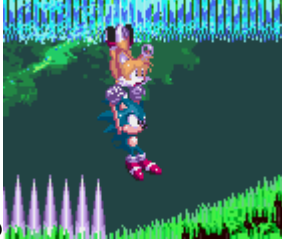


☐@fVfbf|fAf^fbfN☐ifejCf<fX,¾,¯☐j



☐@<ó,ð"ò,ñ,Å,ç,é,Æ,«☐A%oñ" ],μ,Ä,éfVfbf|,Å"G,ÉfAf^fbfN,μ,½,è'e,ð'μ,Ë•Ô,μ,½,è,Å,«,é☐B  
☐@fVfbf|^ÈŠO,Íf\_f☐☐[fW,ðŽó,¯,é,ì,Å'€☐ì,í☐T☐d,É☐B

☐@fefCf<fX,i<|—ifvfŒfC☐if\jfbfN☐•fefCf<fX,i,Æ,«☐j



☐@☐@

☐@”ò,ñ,Å,ç,éfefCf<fX,ÉŒü,©,Á,Ä\jfbfN,ª%õñ“]fWffff“fv,·,é,Æ☐AfefCf<fX,É,Â,©,Ü,ê,é☐B  
☐@fefCf<fX,ð’€☐ì,·,é,î☐A\jfbfN,ª☐s,·,É,ç☐,,ç☐Š,É,à☐s,·,é☐B

☐@ŠŠ<ó,·,é☐ififbfNf<,¾,~☐j



☐@☐@

☐@%oň“]fWffff“fv’t,É☐yEnter☐z☐BfL☐[,đ%oŸ,μ,½,Ü,Ü,É,·,é,ÆfOf%ofCf\_☐[,Ý,½,¢  
,ÉŠŠ<ó,Å,«,é☐B

☐@☐y☐©☐z☐y☐“☐z,Å•ûĀü“]Š·☐BEnterfL☐[,đ•ú,·,Æ’...’n,·,é☐B

☐@ŠŠ<ó,μ,È,ª,çififbfNf<,lfpf“f` ,Å“G,ÉfAf^fbfN,Å,«,é☐B

☐@fpf“f` ^ÈŠO,lf\_f☐☐lfW,đŽó,¯,é,ì,Å’☐^Ó,ª•K—v☐B

☐@•Ç,É,Â,©,Û,é☐ififbfNf<,¾,☐j



☐@

☐@ŠŠ<ó,μ,È,<sup>a</sup>,ç•Ç,É,Ô,Â,©,é,Æ•Ç,É,Â,©,Û,ê,é☐B%oñ“JfWfff“fv,Å•Ç,©,ç—£  
,ê,Ä☐yEnter☐z,Å,Û,½ŠŠ<ó,Å,«,é☐B

☐@•Ç,É,Â,©,Û,Ä☐y☐<sup>a</sup>☐z☐y☐«☐z,Å•Ç,ð“o,Å,½,è☐~,è,½,è,Å,«,é☐B

## ftf<%oæ-Ê

□@- {ftfg, íAftf<fTfCfY, ì%oæ-Ê, ÅŠy, μ, ρ, ±, Æ, à, Å, «, Ü, ·□B, ½, ¾, μ□Aftf<%oæ-Ê, É, ·, é, Æf□fjf...  
□[fo□[, í%oB, ê, Ä, μ, Ü, ç, Ü, ·, ì, Å□AŠeŽífifvfVf#f“, ì•ï□X, ð□s, α, Æ, «, É, í□ACE³, ìfEfCf“fhfEfTfCfY, É-  
ß, ·K—v, ¢, , è, Ü, ·□Bftf<%oæ-Ê□E’Ê□ífEfCf“fhfE, ì•ï□X, í□Af□fjf...□[fo□[, ìFull Screen, ì□€-  
Ú, ðfNfŠfbfN, ·, é, ©□A□yF4□z, Å□s, ç, Ü, ·□B

## f|[]fY

[]@fQ[]f€ ,đ^êŽž't'f,μ,½,¢Žž,í[]Af[]ffj...[]fo[][,ìPause,ì[]€-  
Ú,đf}fEfX,ÅfNfŠfbfN,·,é,©[]A[]yF3[]z,đ%oÿ,μ,Ä,,¾,¾,¢[]B,à,α^ê"x[]yF3[]z,đ%oÿ,·,Æ[]AfQ[]f€  
,³[]ÄŠj,³,ê,Ü,·[]B

**fQ[f€,ìÄfXf^f]fg**

@,ç,ÜfvfCfC't,lfQ[f€,lf^fCfjg<%œ-Ê,É-ß,è,½,ç,Æ,«,íAf[]fj...[]fo[],ìRestart  
Game,ì€-Ú,ðf}fEfX,ÅfNfŠfbfN,·,é,©A[]yAlt[]z[]{}yR[]z,ð%ÿ,μ,Ä,-  
,¾,¾,ç[]BfvfCfC,ð't'f,μ[]Af^fCfjg<%œ-Ê,É-ß,è,Ü,·[]B

## fŠfZfbfg

□@fQ□[f€,ì'ı'đ%œ-Ê,É-β,è,½,çŽž,í□A□f□fjf...□[fo□[,ìReset,ì□€-Ú,đf}fEfX,ÅfNfŠfbfN,μ,Ä,-  
,¾,³,ç□B□wSONIC THE HEDGEHOG 3□x□wSONIC & KNUCKLES□x□wSONIC THE  
HEDGEHOG 3 & KNUCKLES□x,ì,ç,„,ê,©,đ'ı'đ,Å,«,é%œ-Ê,É-β,è,Ü,·□B



**fQ[f€,i|—<sup>1</sup>**

Q@fQ[f€,đ|—<sup>1</sup>,μ,<sup>1</sup>/<sub>2</sub>,čŽž,ÍAf[fjf...[.,©,çExit,đ'Í,Ô,©A[yAlt[z]{yF4[z,đ%öŸ,μ,Ä,-  
,<sup>3</sup>/<sub>4</sub>,<sup>3</sup>,čB

fjff...[fo[

Game Menu

Options

Help Menu

## Game Menu

Restart Game @ "fQ[f€.,ìÄfXf^fg

Reset @ "fŠZfbfg

Pause @ "fllfy

Special Stage Mode @ fXfyfVfff<fXfe [fW,ì,Ý,đŠy,μ,ρ,±  
,Æ,ª,Å,«,Ü,·B "fXfyfVfff<fXfe [fWf, [fh

Exit @ "fQ[f€.,ì!—<sup>1</sup>

## fXfyfVfff<fXfe[]fWf,[]fh

-{•Ò,Æ,í•Ê,É—p^Ó,<sup>3</sup>,ê,<sup>1</sup>/<sub>2</sub>fXfyfVfff<fXfe[]fW,đŠy,μ,ρ,±  
,Æ,<sup>3</sup>,Â,«,Ü,·[]B[]y[]<sup>3</sup>[]z[]y[]«[]z,Â[]šf}[]fN,ìfj[]f\

f<,đ“® , © , μ [] A [] u START [] v , É [] † , í , <sup>1</sup> , Ä [] y Enter [] z , Å f X f ^ [] f g , Å , · [] B

,Ü, <sup>1</sup>/<sub>2</sub> [] A [] u START [] v , É f j [] f f < , đ [] † , í , <sup>1</sup> , Ä [] y [] © [] z [] y [] “ [] z , Å f j [] f f < , ì [] F , <sup>3</sup> • ï , í , è , Ü , · [] B [] š , <sup>3</sup> [] Â , † , Æ , « , í f \

fjfbfN[]A[]Ô,†,Æ,«,ÍfifbfNf<fY,<sup>3</sup>Žg—pfLfff%ofNf^[][,Æ,È,è,Ü,·[]B

## Options

Full Screen  ftf<%oæ-É

## Menu Bar

f[]fjf...[]fo[][,đ[]Á,μ,½,¢žž,í[]Af}fEfX,Å,±,ì[]€-Ú,đfNfŠfbfN,·,é,©[]A[]yF5[]z,đ%oÿ,μ,Ä,-  
,¾,¾,¢[]B,à,æ^ê"x"~,¶'€[]ì,đ[]s,!,î[]A,Ü,½•\Ž!,¾,ê,Ü,·[]B

## Change Controls

'€[]ì,Éžg—p,·,éfl[][,đ•ï[]X,μ,½,¢žž,í[]Af}fEfX,Å,±,ì[]€-Ú,đfNfŠfbfN,·,é,©[]A[]yF7[]z,đ  
%oÿ,μ,Ä,,¾,¾,¢[]Bžg—pfL[][,đ•ï[]X,·,éf\_cfAf[]fOf{fbfNfX,ª€»,é,Ü,·[]B

## Use Joystick

fL[]f{[]fh[]AfWf#fCfXfefBfbfN[]A,Ç,¿,ç,ÅfQ[]f€,đfvf€fC,·,é,©•ï[]X,μ,½,¢žž,í[]Af}fEfX,Å,±  
,ì[]€-Ú,đfNfŠfbfN,·,é,©[]A[]yF8[]z,đ%oÿ,μ,Ä,,¾,¾,¢[]BfWf#fCfXfefBfbfN,đžg—  
p,·,é[]ê[]#,í[]A,P,o[]A,Q,o,Ç,¿,ç,ªžg,æ,ì,©,à'l'đ,μ,Ä,,¾,¾,¢[]B"}NO USE"} ,Æ,¢,æ•¶žš,ì%oE%o  
; ,É, ,é[]ã%oº,ì-Ú[]·,è,đfNfŠfbfN,·,é,Æ[]Ažg—p,Å,«,éfwf#fCfXfefBfbfN,ª•\Ž!,¾,ê,Ü,·[]B

## Sound Test

BGM[]AS.E.,đ'®,,±,Æ,ª,Å,«,Ü,·[]Bf}fEfX,Å,±,ì[]€-Ú,đfNfŠfbfN,μ,Ä,,¾,¾,¢[]B

## Help Menu

f w f < f v , i ž a — v , è € - ú , a ž i , ³ , ê , ä , ç , ü , · B f N f Š f b f N , · , ê , î A ' ¼ ú , » , ì € - ú , é f w f f f " f v , · , é , ± , Æ , a , Å , « , ü , · B

Contents

How to play the game

Keyboard and Joystick Controls

Gameplay Hotline

How to use Help

**fXfyfVfff<fXfe[]fW[]Ef{[]fifXfXfe[]fW**

fXfyfVfff<fXfe[]fW

f{[]fifXfXfe[]fW

SONIC THE HEDGEHOG 3 & KNUCKLES

**fXfyfVfff<fXfe[]fW**

[]@fXfyfVfff<fŠf“fO,É[]G,é,ÆfXfyfVfff<fXfe[]fW,É[]i,Ý,Ü,·[]B

[]@fLfff

%ofNf^>[][,đ‘€>[]i,μ,ÄfXfe[]fW,ì,·,×,Ä,ìfuf<>[]f{>[]f<,É[]G,Á,Ä[]AfÆfbfhf{>[]f<,©fŠf“fO,É·i,ì,ê,îfX

fe[]fWfNfŠfA,Á,·[]B[]ifŠf“fO,đŽæ,Á,Ä,ç,,Æ[]A,¿,å,Á,ÆfCfC,±,Æ,ª<N,±,è,Ü,·[]j

[]@fNfŠfA,·,é,Æ[]A[]d—vfAfCfef€,ìjfflfXfGf[]%of<fh,ªŽè,É“ü,è,Ü,·[]B

‘€>[]i·û—@[]c[]c[]y[]ª[]z[]y[]©[]z[]y[]”[]zfL[][,Á^Ú”®[]A[]yEnter[]z,ÁfWfff“fv,Á,·[]B



‡@fXfe[]fW,ÉŽc,Á,Ä,ç,éfuf<>[]f{>[]f<,ì[]”  
 ‡AfXfyfVfff<fXfe[]fW,Á[]W,ß,½fŠf“fO,ì[]”  
 ‡Bfuf<>[]f{>[]f<,É,·,×,Ä[]G,ê,îfXfe[]fWfNfŠfA  
 ‡BfÆfbfhf{>[]f<,É[]G,é,Æ<[]S“l,ÉfXfe[]fW[]l—<sup>1</sup>  
 ‡C[]šf}[]fN,ìfof“fp[]f{>[]f<,É[]G,é,Æ’e,«•Ô,<sup>3</sup>,ê,é

[]ŸfXfyfVfff<fXfe[]fWfNfŠfA



[]@

[]@fXfyfVfff<fXfe[]fW,ª[]l—<sup>1</sup>,·,é,Æ[]AfXfRfA%œ-Ê,É,È,è,Ü,·[]B

[]W,ß,½jfflfXfGf[]%of<fh,ª•\Ž!,<sup>3</sup>,ê[]AfXfRfA,ªfvf%ofX,<sup>3</sup>,ê,Ü,·[]B



fvfCefCfefNjjbfN

## fflfXfGf f%of<fh

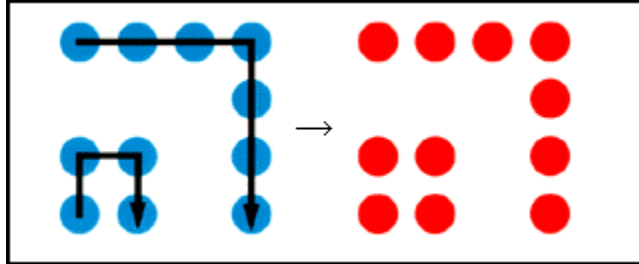
@wSONIC THE HEDGEHOG 3xwSONIC & KNUCKLESx,Å,íAfffXfGf

%of<fh,ð,VCEÂW,ß,é,ÆAfGf“ffBf“fO,ª,µ•ï,í,è,Û,·B

@,Û,½Af\ffbfN,ífflfXfGf f%of<fh,ð,VCEÂW,ß,é,ÆAfX[fp[f\ffbfN,É•ïg,Å,«,é,æ,æ,É,È,è,Û,·B

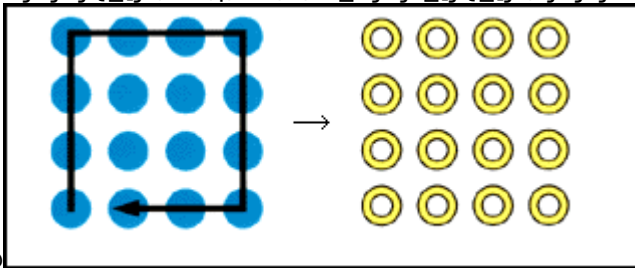
**fvfĈfCfefNfjfbfN**

□@fuf<□[f{□[<É□G,Á,Ä,ç,,Æ□AfĈfbfhf{□[<É•î,í,è,Û,·□B



□@•À,ñ,Å,ç,éfuf<□[f{□[<ì,ç,¿,î,ñŠO'α

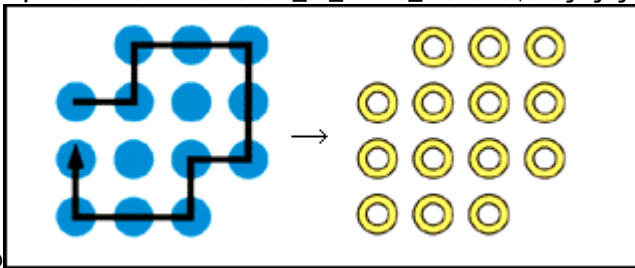
,đfĈfbfhf{□[<É•î,í,Ä^í,p,Æ□Afuf<□[f{□[<afŠf"fo,É•î,í,è,Û,·□B



□@

□@à,Æ,©,ç, ,éfĈfbfhf{□[<đ~—p,μ,Ä^í,ñ,Å,à,n,j,Å,·□B

□@•žG,È•À,Ñ,©,½,Å,à□A□ăžè,□G,Á,Ä,ç,~,îfŠf"fo,É,Å,«,Û,·□B

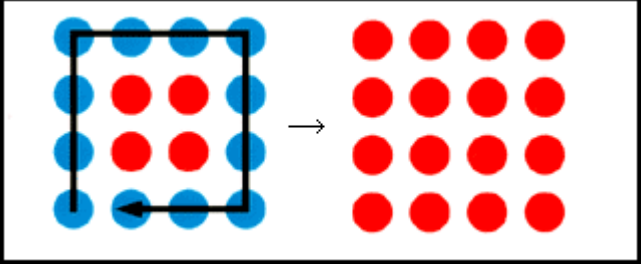


□@

□@"à'α,ÉfĈfbfhf{□[<âfof"fp□[f{□[<â, ,é,Æ□AŠO'α

,îfuf<□[f{□[<É□G,Á,Ä,àfŠf"fo,É,È,è,Û,¹,ñ□B

□@





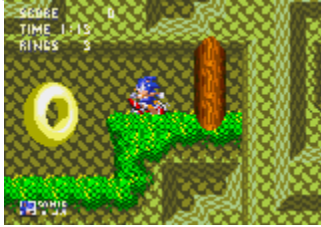
**fX[fP[fGf%f%fh**

fX[fP[fGf%f%fh, íwSONIC THE HEDGEHOG 3 & KNUCKLES[x, ìNfŠfA, É, Æ, Á, Ä, Å, à, d  
—v, ÈfAfCfef€, É, È, è, Ü, ·B

wSONIC 3[x, ¾, ¯, ìvfÆfC, ì, Æ, «, É, íX[fP[fGf%f%fh, ío, Ä, «, Ü, ¹, ñB

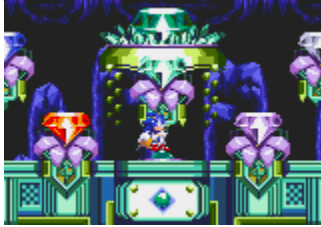
@fX[fP[fGf%f%fh, ð, VÆÂW, ß, é, ÆA wSONIC THE HEDGEHOG 3 &  
KNUCKLES[x, ìGf“ffBf“fO, º, µ•ï, í, è, Ü, ·B

fX[]fp[]fŠf“fO



fjfiXfGf[]f%of<fh,đ7ĈĀŽ[],Á,Äf][][]f“ ,V^È[]~ ,É[]i,p,Æ[]AfXfyfVfff<fŠf“fO,³fLf%ofLf%o<P,-  
fX[]fp[]fŠf“fO,É•ï,í,è,Ü,·[]B  
,±,ìfX[]fp[]fŠf“fO,É[]G,é,Æ[]AfqfhfDf“f[]f[]fX,É[]i,Ý,Ü,·[]B

fqfhfDf“fpfCEfX



,Í,¶,ß,ÄfqfhfDf“fpfCEfX,É“ü,é,Æ□A,VCEÂ,ìjfflfXfGf□f%of<fh,ª□Õ’d,É□ü,ç,ê,Ü,·□B  
,±,ì□ü,ç,ê,½jfflfXfGf□f%of<fh,ì□ã,É%oñ“]fWffff“fv,Å□æ,é,Æ□AfxfyfVfff<fXfe□[fW,É□i,ß,Ü,·□B  
'€□ì•û-@,Æ%oæ-Ê,ìCE©•û,Í□wSONIC & KNUCKLES□x,Æ“~,¶,Å,·□B



**f{[fifXfXfe[fW**

f|fCf“fgf}[fj[.l[ ,l—Ö,É”ò,Ñž,p,Æ[Af{[fifXfXfe[fW,Éi,Ý,Ü,·B

[wSONIC THE HEDGEHOG 3[x]c]cfKf€f{[f<f}fVf“fXfe[fW

[wSONIC & KNUCKLES[x]c]cŽ,Á,Ä,¢

,éfŠf“fO,l[”,É,æ,Á,Ä[AfXf]fbfgf}fV[f“,©f[[]fŠf“fOfWfff“fv,l,ç,ì,ç,©,lf{[fifXfXfe[fW,Éi,Ý,Ü,·B

[wSONIC THE HEDGEHOG 3 & KNUCKLES[x]c]cŽ,Á,Ä,¢

,éfŠf“fO,l[”,É,æ,Á,Ä[AfKf€f{[f<[AfXf]fbfgf}fV[f“[Af[[]fŠf“fOfWfff“fv,l,ç

,.,ê,©,lf{[fifXfXfe[fW,Éi,Ý,Ü,·B

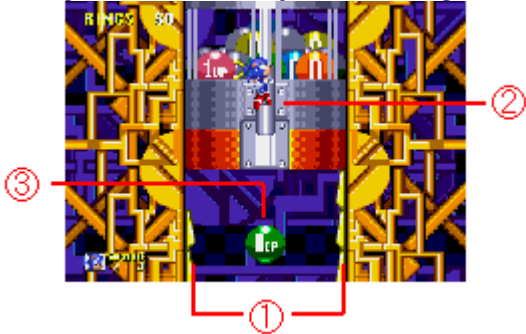
fKf€f{[f<fXfe[fW

fXf]fbfgf}fV[f“fXfe[fW

f[[]fŠf“fOfWfff“fvfXfe[fW

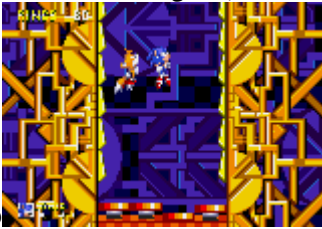
# fKf€f{[]f<fXfe[]fW

[]@•úĈüfL[][,Ā^Ú“@[]A[]yEnter[]z,ÍŽg,ϕ,Ü,<sup>1</sup>,ñ[]B



[]@

[]@‡@—¼'α,lfjof“fp[][,É,Ô,Ā,©,é,ÆfWffff“fv  
>[]@‡Afnf“fhf<,ð%ññ,·,ÆfAfCfef€f{[]f<,ā,Ā,Ä,,é  
>[]@‡B%°°,É—Ž,¿,È,ϕ,æ,α,ÉfAfCfef€f{[]f<,ðŽæ,Ā,Ä,ϕ,



[]@

[]@fXfe[]fW,ì,ϕ,¿,Ī,ñ%°°,lfjf^fpf<fg,Í^ê%ñŽg,α,Æ[]Ā,!,Ä,μ,Ü,ϕ,Ü,·[]B  
>[]@fjf^fpf<fg,ā,È,ϕ,Æ,«,É%°°,Ü,Ā—Ž,¿,é,ÆfXfe[]fW[]l—<sup>1</sup>,Ā,·[]B

[]@fAfCfef€f{[]f<



ftfCfCf€f{[]f< ftfCfCf€fofŠfA,ª,à,ç,!,é



fAfNfAfofŠfA,ª,à,ç,!,é



fTf“f\_[]fofŠfA,ª,à,ç,!,é



fŠf“fO,ªfvf%ofX10EÁ



fvfCfCf,,[]fLfff%o,ìŽc,è” ,ªfvf%ofX,P



Á,!,½jff^fpf<fg,đ,à,Æ,É-β,·



,Ô,Â,©,é,Æ'e,«•Ô,<sup>3</sup>,ê,é



%o½,à,à,ç,!,È,çfnfYfCf{[]f<

# fXf[]fbfgf}fV[]f“fXfe[]fW

[]@[]yEnter[]z,ÅfWfff“fv[]A[]y[]©[]z[]y[]“[]z,Å[]¶%oE,É^Ú“@[]B



[]@#[]fXf[]fbfgf|fbfg,É”ò,Ñ[]ž,p,ÆfXf[]fbfg,ª%oñ“]

[]@#[]AfXf[]fbfg,ª,π,Û,,»,,è,|,ÎfŠf“fO,ªfvf%ofX,³,è,é

[]@#[]Bf{f“fuf[]fbfN,É“-,½,é,Æ’e,«”ò,î,³,è,é



[]@#[]Cfuf[]fbfN,É%o½“x,à[]G,é,ÆfS[]f<fuf[]fbfN,É•ï,í,é

[]@#[]DfŠfo[]fXfuf[]fbfN,É[]G,é,ÆfXfe[]fW,ì%oñ“],ª<t,É,È,é

[]@#[]EfS[]f<fuf[]fbfN,É[]G,é,ÆfXfe[]fW[]|—<sup>1</sup>



**fLfff%ofNf^[][]D%oi**

f}fjfbfN[]EfU[]EfwfbfWfzfbfO  
f}fCf<fX[]EfefCf<fX[]EfpfEfA[]  
fifbNf<fY[]EfU[]EfGfLfhfi  
.c.'[]DfGfbfOf}f“

☐@fjfbfN☐EfU☐EfwfbfWfzfbfO



☐@,²'¶'m☐A☐čŠE☐Å'¬,ì%o¹'¬fnfŠflfYf~☐B  
☐@☐i;%oñ,ì-`Ĉ,Å,í"☐à,ì☐g•,—V"‡☐h,Å'åŠ^-ô☐B

☐@f}fCf·fX☐EfefCf·fX☐EfpfEfA☐I



☐@fjfbfN,ì'Š-☐H☐@,ì,Q-{|,ìfvfbf|,ìCE³<C,ÈfLfcf|☐B  
☐@fvf<fvf<<ó,ð"ò,ñ,ÅfjfbfN,ì-`CE`,ð,"Žè"`,¢☐B



☐@fifbfNf<fY☐EfU☐EfGfLfhfi



☐@  
☐@•,—V“‡,̀fjfflfXfGf☐f%of<fh,ðŽç,éfK☐[fffBfAf“☐B  
☐@,¿,å,Å,Æ,¾,¯<ó,ð”ò,Ô,±,Æ,ª,Å,«,é,ì,¾☐B

©,c,'DfGfbfOf}f“



©

©,Ü,½,Ü,½“oê,·,é^«,ì“VË%ÈŠwŽÒBfflfXfGf%fh,đžè,É“ü,ê,ÄA-ÚŽw,·,í  
čŠE,ìŽx”zŽÒ,©H

,» ,ê,Æ,à-œ”N,â,ç,êfLfff%,©H

## **fXfg[fŠ[**

! , ± , ĩ Q [f€ , í AfXfg[fŠ[ "I , É w f j f b f N E f U E f w f b f W f z f b f O , Q x i f K f h f % o f C f u j , ĩ ± , « , Æ , È , Á , Ä , ç , Ü , · , º A w f j f b f N , Q x , ð ' m , ç , È , Æ , à A \ • º , É f Q [f€ , ð , Š y , µ , Ý , ç , ½ , ¾ , , ± , Æ , º , Å , « , Ü , · B

w f j f b f N , Q x , ĩ - ` CE - , ĩ CE ä c c

f j f b f N , Æ f e f C f < f X , ĩ - · - Š , ĩ

, c , ' D f G f b f O f } f " , ĩ % o A - d

□@'O%ñ,ì-`CE⁻,ÅfjfbfN,ÉfRfef“fpf”,É%ó,³,è,½□A,c,'□DfGfbfOf}f“,ì—  
v□Ç□EfffXfGfbfO,í□A□;Ü,³,É'n□ã,Ö,Æ'Ä—Ž,đŽn,β,Ä,ç,Ü,μ,½□B

□@,³,Ä□A,»,è,æ,è'n□ã,É<β,çfffXfGfbfO,ì—Ž%º<O“¹□ã,É□A,Đ,Æ,Â,ì<□'â,È  
%o\_,ì,©,½,Ü,è,²•,,ç,Ä,ç,Ü,μ,½□B

□@,»,μ,Ä□A,»,ì%o\_,ì't,É,Đ,Á,»,è,Æ%B,è,é<□'â,È%oe,²□c□c□B

□@,»,Ñ,ì—š,ÄŽR□X□A□L,²,é□X—Ñ□c□c,»,ì%oe,í“†,Â,μ,½□B<ó't,đ•Y,²<□'â,È□g•,—  
V“†□h,¾,Á,½,ì,Â,·□B

□@%ô,ì<Ê,Æ,È,Á,½fffXfGfbfO,í□A,»,ì□g•,—V“†□h,É,à,è,ÉCEf“È,μ,Ä,μ,Ü,ç,Ü,μ,½□B

□@•ö,è—Ž,¿,éŽR□X□A,È,—“|,³,è,é□X—Ñ□B

□@,»,ì,Æ,Ä,Â,à,È,ç□ÖCE,,í□g•,—V“†□h,đ'â,«,CEX,©,¹□A,»,ì□,“x,đ,μ,¾,ç,É'á,,³,¹,Ä,ç,«,Ü,·□B

□@,»,μ,Ä□A,Â,ç,ÉŠC-Ê,Ö□Ö“È,·,é•,—V“†□B

□@•,—V“†,í'Ä”g,Æ,à,ç,ì,é'â,«,È”g,đ,²,È,ç,¹,Ü,μ,½,²□AŠC'ê,Ö'¾,Ý,í,μ,Ü,¹,ñ,Â,μ,½□B

fffXfGfbfO,đ•ø,ç,½•,—V“†,í□A%½Ž-,à,È,©,Á,½,©,ì,æ,²

,É,»,ì<□'â,ÈŽp,đ,í,,©,ÉŠC□ã,ì□ã<ó,É,Æ,Ç,β,Ä,ç,½,ì,Â,·□B



□@,» ,ê ,© ,ç□““úĀě□□cfffXfGfbfO,Æ•,—V“‡,ì□Ō“Ē,ì ,Á,½□ê□Š,© ,ç%“,—f,ê,½, ,é“‡□B  
□@,Q-{|,lfVfbf|,lfLfcf|□EfefCf<fX,í□A“Ē'RŽn,Ü,Á,½<—í,ÈfjlfXfGf□f%of<fh,ì”½%ž,đ□A”p,ª”-  
¾,μ,½fWf...fGf<fĀ□[f\_□[,ĀfLfffbf` ,μ,Ā,ç,Ü,μ,½□B  
□u,±,ì'O,ì'â'Ā”g,Æ,È,É,©ŠÖĀW,ª, ,é,ì,©,à□□□□v,» ,xŠ´ ,¶,½fefCf<fX,í□AfvjfbfN,ì,ç  
,é•I•Ó,Ö,ÆĀü,© ,ç,Ü,μ,½□B

□@,» ,ì,±,ë□A•I•Ó,Ā'<□Q,đ,μ,Ā,ç,½fvjfbfN,í□A□-³,ÈfŠf“fO,ª□»•I,É—,ê'... ,ç,Ā,ç  
,é,ì,đĀ© ,Ā,˘,Ā,ç,Ü,μ,½□B

□@ĀĀ'ă•¶Žš,ç,μ,« ,à,ì,ª'x,ç,ê,Ā,ç,é□-³,ÈfŠf“fO□B

□@,» ,ê,đŽè,ÉŽæ,Á,½fvjfbfN,í□A, ,é□g“‡□h,É,Ā,ç,Ā,ìĀĀ,ç“`□à,đŽv,ç□o,μ,½,ì,Ā,·□B

□@%“ ,ç□ì□A,» ,ì“‡,ª,Ü,¾'ă—x,ì^ê•” ,¾,Á,½,±,ë□B

□@,» ,±,É,í—D,ê,½•¶-¾,đŽ□,Á,½□□X,ª•é,ç,μ,Ā,ç,Ü,μ,½□B

□@,» ,ì•¶-¾,í□A, ,é□g—í,ì□□h,lfGfjf<fM□[ ,É,æ,Ā,Ā•½~a,Ā-L,© ,ÈŽĐ%öi,đ'z,ç,Ā,ç,Ü,μ,½□B

□@,μ,© ,μ, ,é,Æ,«□A□g—í,ì□□h,lfGfjf<fM□[ ,đ%ö,ª,à,ì,É,μ,æ,x

,Æ,μ,½'~V^ê”h,ª□AĀĕ,Ā,Ā,» ,lfGfjf<fM□[ ,đ-\'-³,¹,Ā,μ,Ü,Ā,½,ì,Ā,·□B

□@•¶-¾,í^ê□u,É,μ,Ā-Ā-S,μ□A—đŽj,© ,ç□Ā,|<Ž,è,Ü,μ,½□B

□@,» ,μ,Ā,±,ì□o—^Ž-,ª, ,Á,½Āě□□c“V<ó,© ,ç•',ç□~ ,è,½□□X,ª•¶-

¾,ì^ê•”•ª,đ□g“‡□h,Æ,μ,Ā□C•æ,μ□A□g—í,ì□□h,à,ë,Æ,à'ă<ó,É•ú,Ā,Ā,μ,Ü,Ā,½□□c,Æ,ç,x  
,ì,Ā,·□B

□@—,ê'... ,ç,½fŠf“fO,Æ□g“‡□h,ì“`□à□□□□B

,É,ª,©-³□« ,É%ò,© ,μ,³,É,© ,ç,ê,½fvjfbfN,í□A□Ā,Ñ-`Ā˘,Ö,Æ—.—

š,ĀĀ^□S,đ,μ,½,ì,Ā,μ,½□B



□@'Ä—Ž,μ,½ffXfGfbfO,©,ç'E□o,μ,½,c,'□DfGfbfOf}f",í□A•,—V"‡,ÉfflfXfGf□f%of<fh,ª, ,é,±,Æ,É<C,Ä,ç,Ä,ç,Ü,μ,½□B

□@ffXfGfbfO,ìŠj,¯,½'â'n,ì<T—ô,©,çfLfffbf` ,Å,« ,é□A<□'â,ÈfflfXfGf□f%of<fh,ì"½%ož□B,» ,ìGfIf<fM□[ ,ðŽg,¡,î□AffXfGfbfO,ð□Ä,Ñ%oF'^ ,Ö"ò,Ñ—š,½,¹,é,±,Æ,à%oÂ"\,È,ì,Å,·□B

□@fflfXfGf□f%of<fh,ðŽè,É"ü,ê,é,½,β□A•,—V"‡,É<}fsfbf` ,ÅŠ'ñ,ðÆš□Y,μ,Ä,ç,-,c,'□DfGfbfOf}f"□B

□@,» ,μ,Ä□A"®•",½,¿,ð,³,ç,Á,Äf□f{fbfg,Ö,Æ%oü'ç,μ□AŠÂ««•ï%o»f}fV□[f" ,Å•,—V"‡,ìŽ©'R,ð,æ,èCEμ,μ,ç,à,ì,Ö,Æ•ï,¡,Ä,μ,Ü,Á,½,ì,Å,μ,½□B

□uf\_□[fnfbfnfbfnfb!!□@fjfjfbfN,æ□A,±,ì"‡,É—^ ,Ä,àŽèCEã,ê,¶,á□I□@□i"x,±,»fflfXfGf□f%of<fh,Æ,±,ì□çŠE,íf□fV,ì,à,ì,É,È,é,ì,¶,á□[ ,Á□I□v

□@,³, □A-ðŽÒ,à•"ä,à□€"ö,í-œ'□□B

□i,±,±,É□gf\fffbfN□EfU□EfwfbfWfzfbfO□h,ì□V,½,È-`CE¯ ,ªŽn,Ü,é,ì,Å,·□B

## fwf<fv, lŽg, ç•û

f[]fjf...[]fo[], ìHelp, ðfNfŠfbfN, ·, é, Æ[]Afvf<f\_fEf“f[]fjf...[][, ðCE» , í, ê, Ü, ·[]B

'm, è, ½, ç[]€-Ú, ðfNfŠfbfN, µ, Ä%º, ³, ç[]B

Contents[]c[]c-ÚŽŸ

How to play the game[]c[]c—V, Ñ, ©, ½

Keyboard and Joystick Controls[]c[]clfL[]f{[]fh[]EfWf#fCfXfefBfbfN, Å, ì'€[]ì

Gameplay Hotline[]c[]ccfzfbfgf%ofCf“

How to use Help[]c[]cfwf<fv, lŽg, ç•û[]i, ç, ÜCE© , Ä, ç, é, ±, ìfgfsfbfN, Å, ·[]j

**fzfbfgf%ofCf“**

feNjfff<fTf[]fg

fZfK,o,b\ftfg[]î•ñ



## fefNfjff<fTf|[]fg

□wSonic & Knuckles Collection□x,ÉŠÖ,·,é<Z□p“l,È,“-â,ç□‡,í,<sup>1</sup>Í□AfZfK,o,bft□[fU□[fTf]  
□[fgfZf“f^□[,Ö,“Šè,ç,ç,<sup>1</sup>/<sub>2</sub>,μ,Ü,·□B□ifQ□[f€,ì□U—<sup>a</sup>-@“™,ÉŠÖ,·,é,<sup>2</sup>Žç-  
â,É,Í,“š,!,Â,«,Ü,<sup>1</sup>,ñ,ì,Â□A, ,ç,©,¶,ß,<sup>2</sup>—<sup>1</sup>□<sup>3</sup>,,<sup>3</sup>/<sub>4</sub>,<sup>3</sup>,ç□j

fZfK,o,bft□[fU□[fTf]□[fgfZf“f^□[  
,s,d,k□@,O,S,V,R□|,W,O□|,U,S,S,P  
Žó•tžžŠô□@CEŽ□`<à□@,P,O□F,O,O□` ,P,V□F,O,O□i□œ,□j“ú□j



,»,ì¼

**fAf“fCf“fXfg□lf<**

fQ□[f€‘I’ð%œ-Ê’t,ì□uUninstall□v,ð‘I,Ô,±,Æ,Å□Afn□[fhfffBfXfN,©,ç- {f}ftfg,ð□í□œ,·,é,±,Æ,ª,Å,«,Ü,·□B

**fXf^fbft**

□ÿfifŠfWfif<fXf^fbft

EXECUTIVE PRODUCER

HAYAO NAKAYAMA

PROJECT MANAGERS

HISASHI SUZUKI

SINOBU TOYODA

MASAHARU YOSII

PRODUCER

YUJI NAKA

DIRECTOR

HIROKAZU YASUHARA

LEAD GAME DESIGNER

HIROKAZUYASUHARA

SENIOR GAME DESIGNERS

HISAYOSI YOSIDA

TAKASHI IIZUKA

LEAD PROGRAMMER

YUJI NAKA

SENIOR PROGRAMMERS

TAKAHIRO HAMANO

MASANOBU YAMAMOTO

CHARACTER DESIGNER

TAKASHI THOMAS YUDA

C.G.ARTIST

UKNITAKE AOKI

ENEMY ARTIST

SATOSHI YOKOKAWA

SCENE ARTISTS

KUNITAKE AOKI

CHIE YOSIDA

TSUNEKO AOKI

SHIGERU OKADA

TAKASHI THOMAS YUDA

SATOSHI YOKOKAWA

ART ASSISTANT

OSAMU OHASHI

MUSIC COMPOSERS

BRAD BUXER

BOBBY BROOKS

DARRYL ROSS

GEOFF GRACE

DOUG GRIGSBY III

SCIROCCO

HOWARD DROSSIN

SEGA SOUND TEAM

BO

SACHIO OGAWA  
MILPO  
MASARU SETSUMARU  
TATSUYUKI MAEDA  
TOMONORI SAWADA  
MASAYUKI NAGAO  
JUN SENOUE

SOUND COORDINATOR  
HISAKI NIMIYA

EXECUTIVE MANAGEMENT  
SHOUICHIROU IRIMAJIRI

EXECUTIVE COORDINATOR  
MAMORU SHIGETA  
TOMIO TAKTMI

TESTERS  
JASON KUO  
RICK GREER  
MIKE WILLIAMS

SOUND SPECIAL THANKS  
MAYUMI NINA SAKAZAKI  
(MRM)  
CUBE CORP.  
OPUS CORP.  
MASANORI NAKAYAMA  
(STUDIO WHO)

SPECIAL THANKS  
JINA ISHIWATARI  
EMI KAWAMURA  
DEBORAH MCCRACKEN  
TAKU MAKINO

□ÿ,o,b"Å^Ú□AfXf^fbft

PRODUCER

TOSHINORI ASAI

DIRECTOR

TADASHI KUROI

PROGRAMMERS

TETSUJI MUKAI (HIC)

HITOSHI OHTA (HIC)

SATORU SUGISAKI (HIC)

HIROAKI ISHIKI (HIC)

MASAAKI WATABIKI (HIC)

SHINICHI ASO (HIC)

INSTALLER PROGRAM

KEI TAKASHIMA

GAME SELECT SCENE DESIGNERS

HISATO FUKUMOTO

KATSUFUMI YOSHIMORI

SOUND COORDINATOR

MASARU SETSUMARU

SOUND ARRANGERS

SHIGEAKI IRIE (USP)

MASAAKI NISHIZAWA (USP)

GORO TAKAHASHI (USP)

TESTER

TAKASHI AKIYAMA

MANUAL&PACKAGE PRODUCER

KAORU ICHIGOZAKI

MANUAL&PACKAGE DIRECTOR  
TAIJI OKAMOTO

MANUAL&PACKAGE DESIGNER  
YUMI NODA

MANUAL&PACKAGE EDITOR  
HIROYA TANAKA

SPECIAL THANKS TO  
HIROKAZU YASUHARA  
HISAYOSHI YOSHIDA

©SEGA ENTERPRISES, LTD. 1994,1997

Microsoft, Windows, íA•Ä Microsoft

Corporation, ì•Ä' <y, Ñ, » , ì'¼, ì', É, ", -, é"o~ ^ ¨•W, Å, ·B

DirectX, DirectDraw, DirectSound, íA•Ä Microsoft

Corporation, ì•Ä' <y, Ñ, » , ì'¼, ì', É, ", -, é ¨•W, Å, ·B

Windows 95, DirectX, DirectDraw, DirectSound, ì³Ž®-¼ì, íA Microsoft Windows 95

operating system, Microsoft Direct X set of APIs, Microsoft DirectDraw application

programming interface, Microsoft DirectSound application programming interface, Å, ·B

Pentium, íA•Ä Intel ŽĐ, ì"o~ ^ ¨•W, Å, ·B

